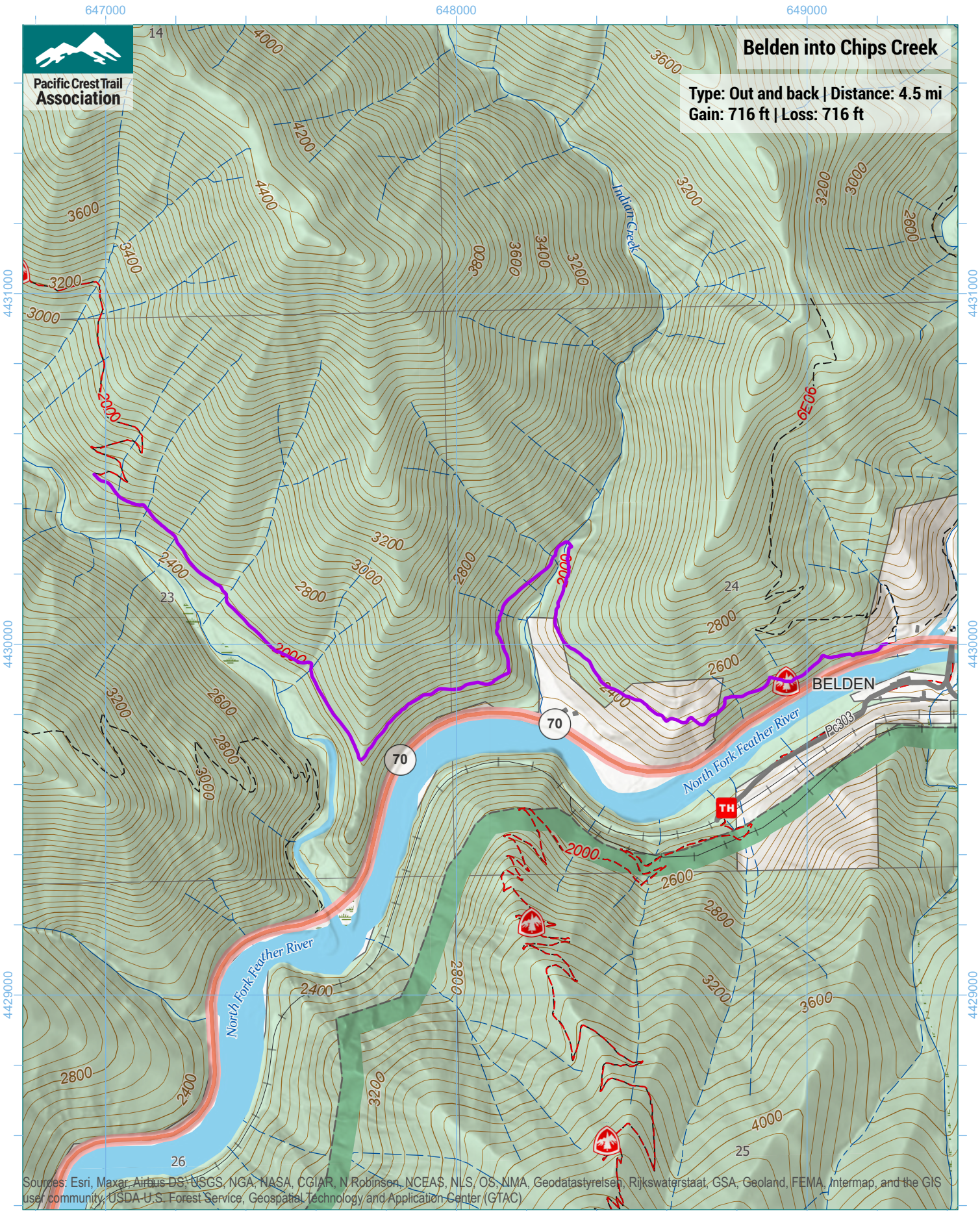


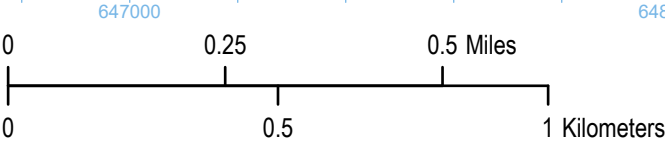


# Belden into Chips Creek

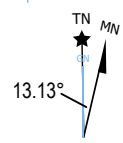
Type: Out and back | Distance: 4.5 mi  
Gain: 716 ft | Loss: 716 ft



Sources: Esri, Maxar, Airbus DS, USGS, NGA, NASA, CGIAR, N. Robinson, NCEAS, NLS, OS, NMA, Geodatastyrelsen, Rijkswaterstaat, GSA, Geoland, FEMA, Intermap, and the GIS user community, USDA U.S. Forest Service, Geospatial Technology and Application Center (GTAC)



1 inch equals 1,167 feet  
1:14,000  
WGS 1984 UTM Zone 10N



Trip data by PCTA  
Basemap by US Forest Service  
Contour interval: 40ft